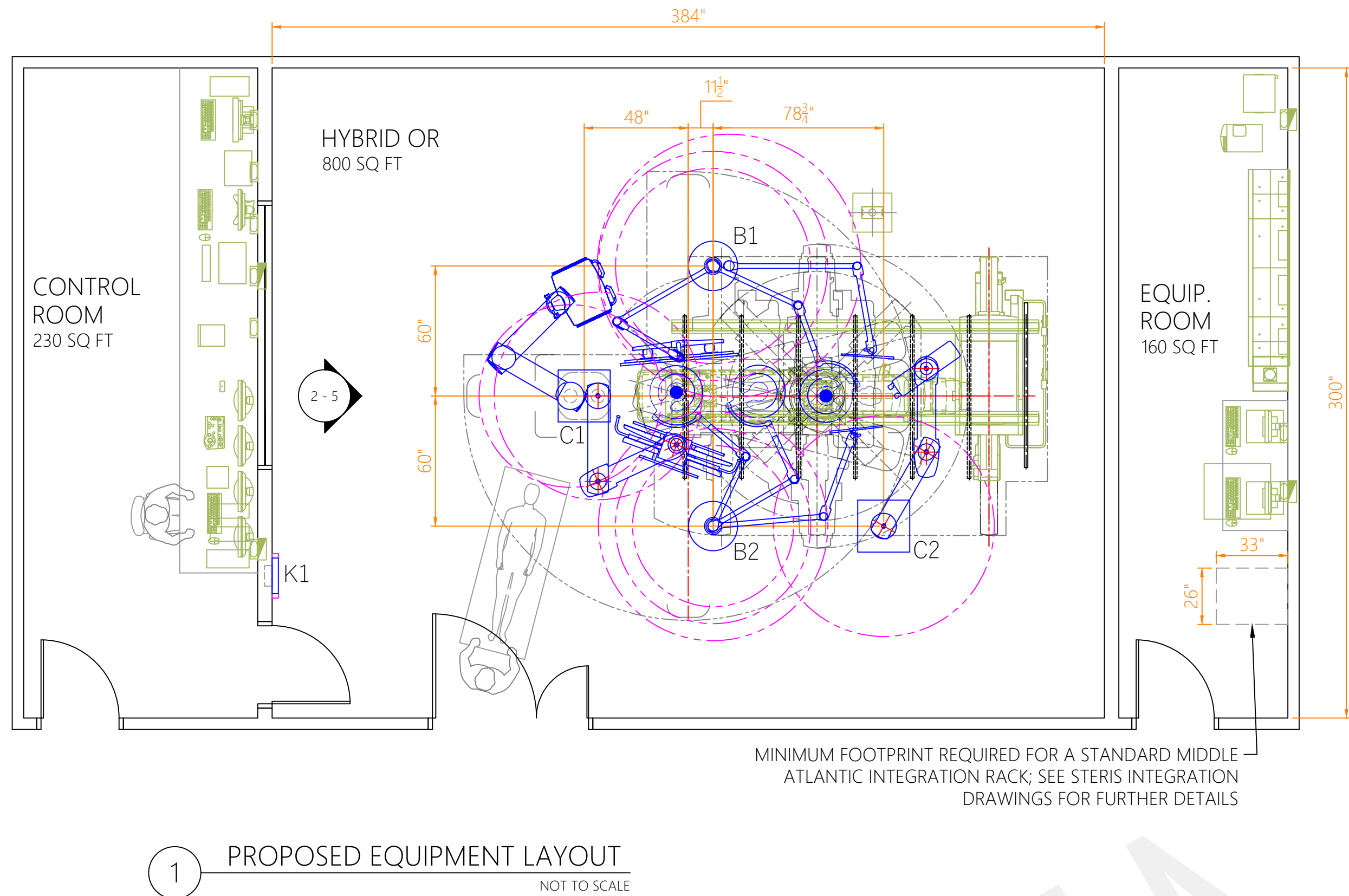
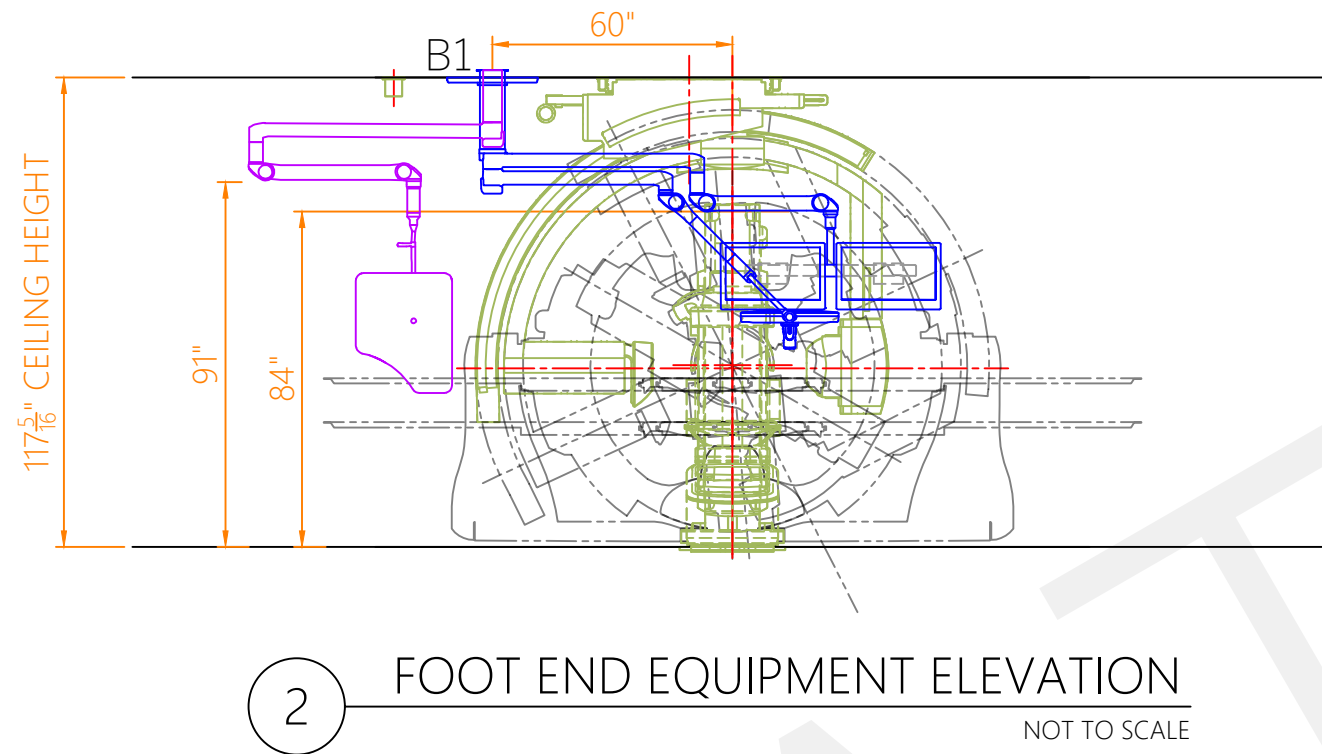


STERIS drawings do not supersede the drawings from the architect of record.

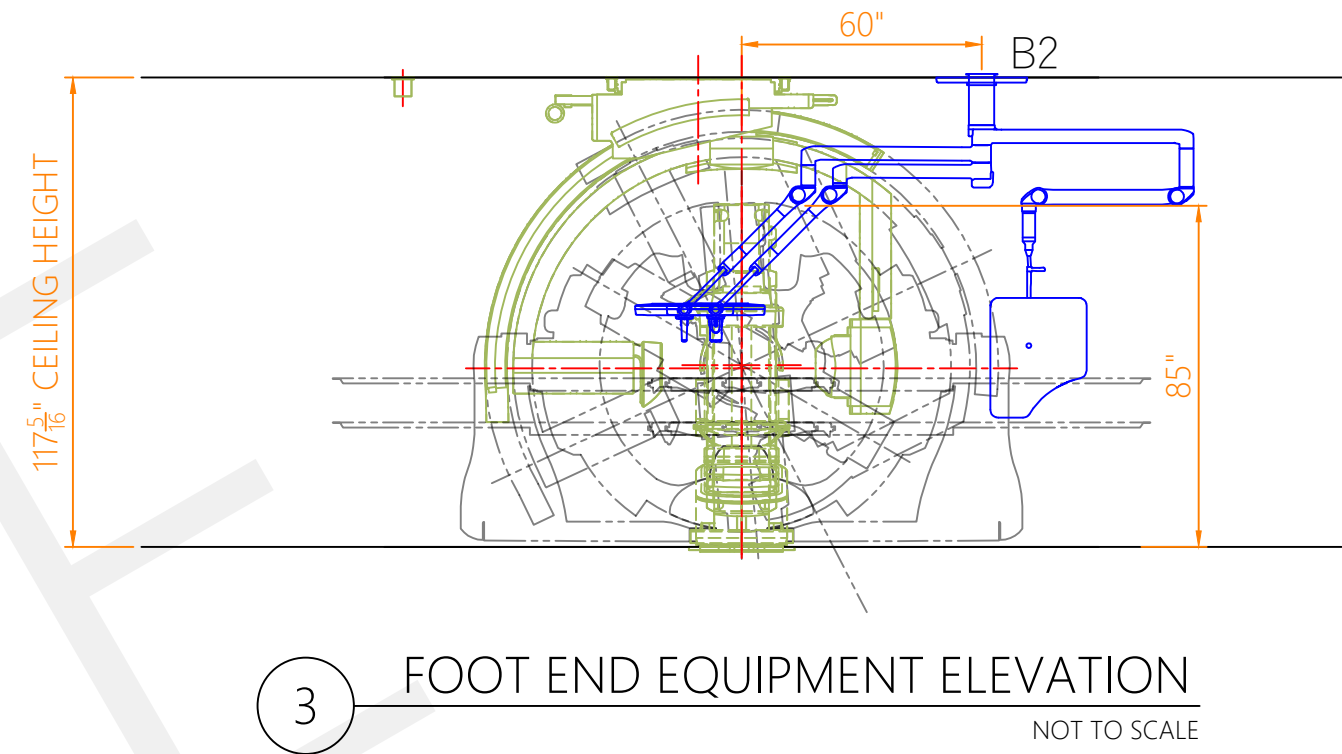


1 PROPOSED EQUIPMENT LAYOUT
NOT TO SCALE

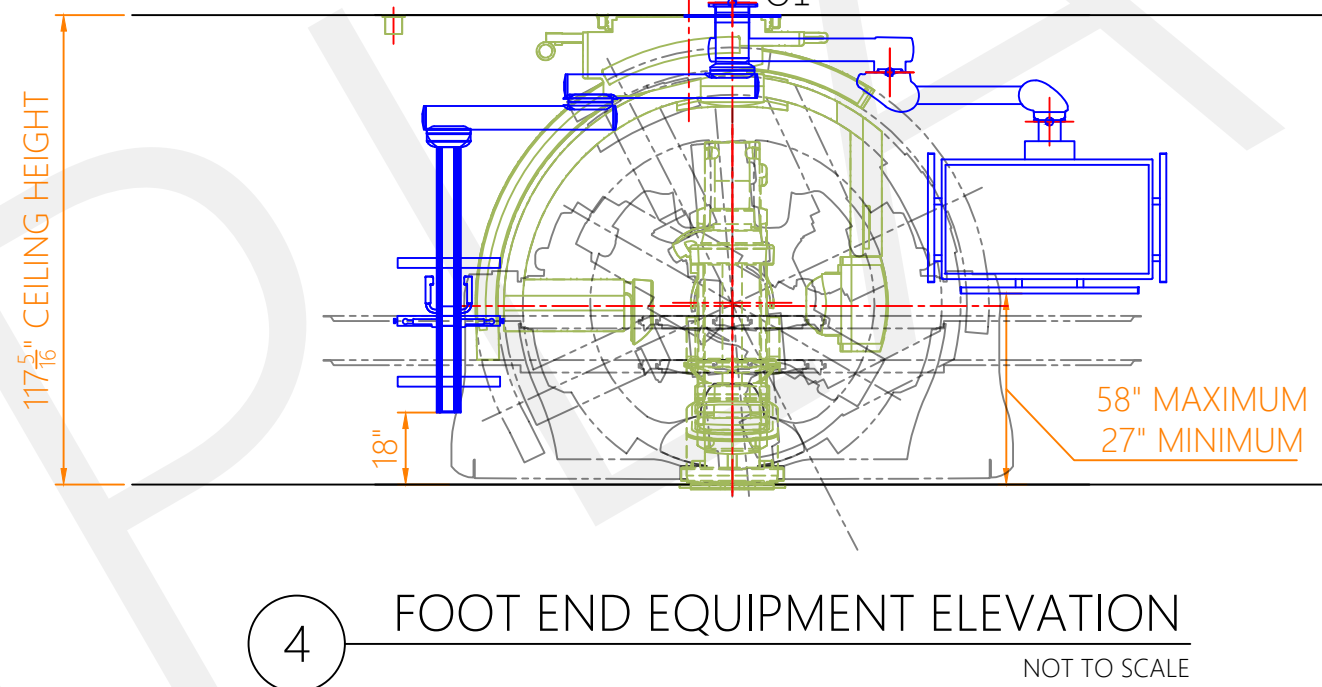
MINIMUM FOOTPRINT REQUIRED FOR A STANDARD MIDDLE ATLANTIC INTEGRATION RACK; SEE STERIS INTEGRATION DRAWINGS FOR FURTHER DETAILS



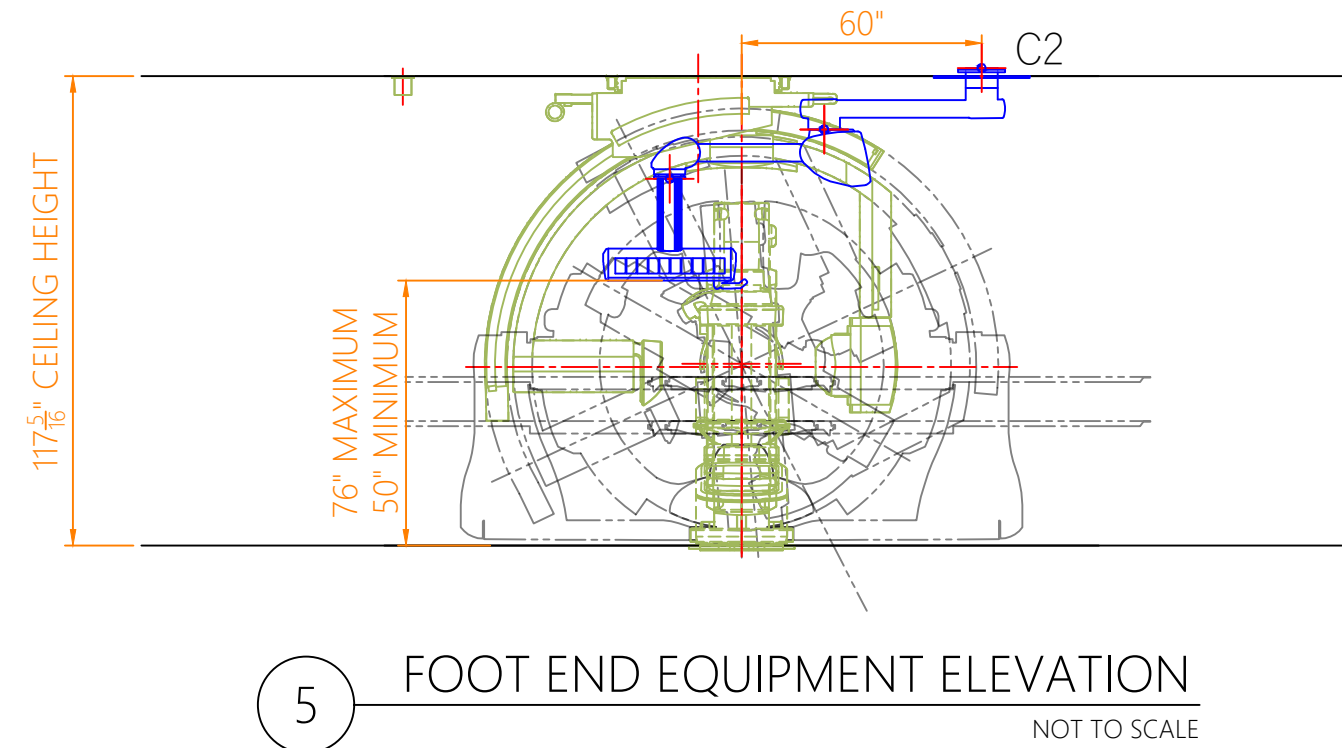
2 FOOT END EQUIPMENT ELEVATION
NOT TO SCALE



3 FOOT END EQUIPMENT ELEVATION
NOT TO SCALE



4 FOOT END EQUIPMENT ELEVATION
NOT TO SCALE



5 FOOT END EQUIPMENT ELEVATION
NOT TO SCALE

EQUIPMENT LIST			
TAG	QTY	DESCRIPTION	
B1	1	A Series-Surgical Light(s) & Accessory Arm(s)	
B2	1	A Series-Accessory Arm(s), Surgical Light(s) & Accessory Arm(s)	
C1	1	Tandem HarmonyAIR Adj Arm Monitor Carrier - HarmonyAIR Fixed-Equipment, Monitor Carrier	
C2	1	HarmonyAIR Adj Arm, Motor Supply Head-Anesthesia	
K1	1	HarmonyAIR A-Series Integrated Wall Control	

A SERIES LIGHT CONDUIT SCHEDULE			
FROM - TO	QUANTITY	SIZE	RESPONSIBILITY
K1 - B1	2	75"	ELECTRICAL CONTRACTOR
K1 - B2	1	75"	ELECTRICAL CONTRACTOR
B1 - B2	CONNECTED VIA FLEX CONDUIT INCLUDED IN SPLIT MOUNT KIT		

- LIGHT CONDUIT SCHEDULE NOTES**
- 3" CONDUIT FOR AC POWER TO K1 & C1. 10AWG WIRE INPUT AC SUPPLY - 120V-240VAC, 7A-3A, 50/60Hz
 - LIGHTING CONDUIT RUNS NOT TO EXCEED 25 FEET
 - CONDUIT REQUIREMENTS FOR LIGHTS ALSO REFERENCED WITHIN THE EQUIPMENT DRAWINGS FOR THE SPECIFIED SURGICAL LIGHT WALL CONTROL SYSTEM
 - DC SUPPLY LIGHTHEAD CABLES REQUIRE 1" CONDUIT WHEN DOUBLE RUNS ARE REQUIRED (LONG RUNS)
 - REFER TO APPROPRIATE EQUIPMENT SPECIFICATIONS TO ENSURE THAT THE MOST CURRENT & DETAILED INFORMATION OF THIS LIGHT SYSTEM IS UTILIZED

THIS LAYOUT IS INTENDED TO ENCOURAGE DISCUSSIONS FOR AN INTEGRATED DESIGN PROCESS.
FOR AN OPTIMIZED OPERATING ROOM DESIGN SOLUTION, PLEASE CONTACT YOUR LOCAL STERIS REPRESENTATIVE.
REFER TO THE IMAGING VENDOR FOR ALL IMAGING SYSTEM DIMENSIONS, LOCATIONS, AND REQUIREMENTS.

STERIS drawings do not supersede the drawings from the architect of record.